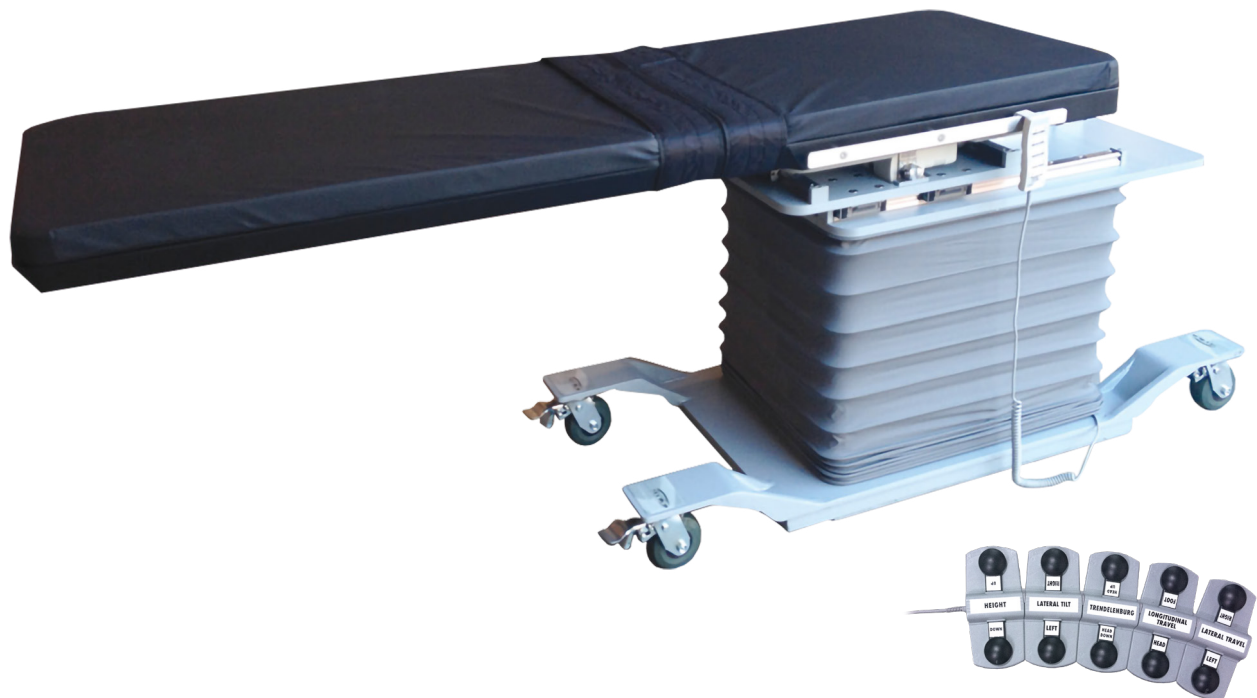




The **Axia BariXray 5** imaging table is cantilevered (diving board) style design with bellows. The “H” style base allows maximum C-Arm clearance along the entire cantilevered length. It comes standard with 1000 pound load rating, 2” patient pad, 27” wide top, locking swivel castors, narrow base for easy patient transfer, extremely low boarding height.

Features

- Cantilevered (diving board) style design
- “H” style base
- 1000 pound load rating
- 2” patient pad
- 27” wide top
- Low boarding height



Specifications

Dimensions

Height: 35 to 43" (88.9 to 109.2 cm)

Width: 27" (68.6 cm)

Length: 86" (218.4 cm)

Weight: 875 lbs (396.9 kg)

Tabletop

Tabletop

Length: 84" (213.36 cm)

Width: 27" (68.6 cm)

Radiolucent Area

Length: 56" (142.2 cm)

Width: 24" (61 cm)

Patient Weight Capacity: 1000 lbs (453 kg)

Mattress Thickness: 2" (5.1 cm)

Base

Shape: H Shaped

Length: 63" (129.54 cm)

Width: 26" (66.04 cm)

Castors: 5" with full swivel and wheel lock

Finish: Epoxy Finish

Movements

Height: 35 to 43" (88.9 to 109.2 cm)

Lateral Tilt: $\pm 17^\circ$

Trendelenburg: $\pm 12^\circ$

Longitudinal Travel: 16" ($\pm 5"$) (40.6 cm (± 12.7 cm))

Lateral Travel: 10" ($\pm 5"$) (25.4 cm (± 12.7 cm))

Power

AC Voltage: 120V~

Frequency: 60 Hz

AC Current: 10A

Electric Shock Protection: Class I

Applied Part Rating: Type B

Mode of Operation: 10% Duty Cycle; 1 min on, 9 min off

