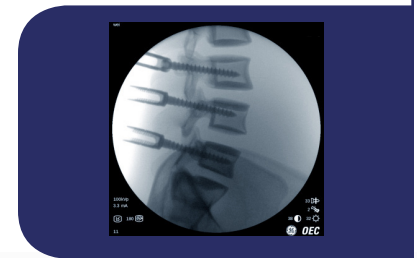




The **GE OEC Brivo Plus** provides automated features that can improve your productivity and reduce uncertainty. The Brivo Plus delivers easy-to-use reliable results during each phase of surgery, from boot-up to cleanup. The Brivo easily brings images into sharp focus using intelligent point-and-shoot technology at the lowest reasonably achievable dose. All of the integrated automated features mean less of a learning curve, fewer retakes, and less need to move the patient for better results.

## Features

- Fully digital camera.
- High-performance image intensifier.
- 16-bit image processing.
- Premium dual leaf collimator, reducing scatter to a lower dose.
- Great positioning and optional laser aimer for targeting.
- Touchscreen interface.
- 100,00 image storage capacity.
- Membrane-covered keyboard.
- Thumbnail image directory.



# Specifications

## Mainframe

- System Height: 67.1" (170.5 cm)
- System Width: 30.7" (78 cm)
- System Length: 70.3" (179 cm)
- Weight: 573 lbs. (260 kg)

## C-arm

- SID: 39.4" (100 cm)
- Free space in arc: 30.7" (78 cm)
- Depth in arc: 26" (66 cm)
- Orbital Rotation: 120° (90° Underscan / 30° Overscan)
- Lateral Rotation: 410° (+205° / -205°)
- Lateral Height: 40.2" (102 cm)
- Wig/wag: 25° (+12.5° / -12.5°)
- Horizontal travel: 8" (20 cm)
- Vertical Travel: 17.5" (44.5 cm)

## C-Arm Movements

- Angulation: 140° rotation (+90/-50°) offers a maximum of projection flexibility
- Motorized hight movement: 19.3" (49 cm)
- Longitudinal Movement: 7.0" (20 cm)
- Panning Movement (Swivel): ±10°
- Rotation: ±200°
- Lowest Lateral Position: 40.4" (201.7 cm)
- Source to Image Distance (SID) 39.1" (99.3 cm)
- Free Space in C-Arm: 30.4" (77.2 cm)
- C-Arm Depth: 29" (73 cm)
- Parallel Movement: Dedicated parallel movement with rear-wheel steering, for easy positioning along operating table.
- C-arm stand length: 77.2" (196 cm)

## Workstation

- Height: 65.7" (167 cm)
- Width: 35.4" (90 cm)
- Depth: 25" (64 cm)
- Weight: 375 lbs (170 kg)
- Monitor swivel ±90°
- Monitor tilt motion: +7° / - 10°

## Generator

- 40kHz high frequency
- 2.2kW monoblock
- Housing heat capacity: 900,000HU
- Housing cooling rate: 12,500HU/min
- Up to 110kVp
- Up to 20mA for radiographic film exposure

## X-Ray Tube

- Stationary anode X-ray tube
- Dual focal spot; Small: 0.6mm x 1.4mm; Large: 1.4mm x 1.4mm
- Tube assembly total filtration 3.35mm Al
- Maximum anode cooling rate: 37,000HU/min
- On-screen tube heat capacity

## 9" Image Intensifier

- Tri-mode 9"/6"/4.5" (23cm/15cm/11cm)
- DQE: 65% (typical)

## Tungsten Collimator

- Denser collimator limits X-ray exposure area
- Reduces scatter radiation
- Improves image detail

## Carbon Fiber Grid

- 60L/cm 10:1 anti-scatter grid
- Reduces scatter radiation effect
- Improves image detail

## Video Camera

- High resolution 1k x 1k CCD camera
- Full digital interface
- Variable gain control

## Video Display

- Dual medical 19" (48 cm) monochrome LCD with anti glare panel.
- Maximum brightness: 1000 Cd/M<sup>2</sup>
- Maximum contrast: 900:1
- 1280 x 1280 high resolution
- Digital Visual Input (DVI) interface for external monitors

## Image Processing

- 1k x 1k x 16 bit image processing
- Dynamic recursive filter with adaption to motion
- Automatic digital brightness and contrast control
- Manual digital brightness and contrast control
- Auto adaptive non-uniformity correction
- Image edge enhancement
- Image negate mode
- Image save and auto-save
- Image swap and auto-swap
- Last image hold (LIH)
- Image zoom and roam
- Left-right image reversal
- Top-bottom image invert

- Digital image rotation
- HIPAA SecureView
- Measurement Software
- Image Annotation
- 100,000 Images storage

## Other Image Storage Options

- CD/DVD writer (Optional)
- USB memory stick port
- Integrated DICOM storage

## Electrical

- Input power (60 Hz or 50 Hz)
- 100V/110V/120V @ 20A
- 200V @ 12A
- 220V/230V/240V @ 10A

## Operating Range

- Temperature: 50° to 104°F (10° to 40°C)
- Humidity: 20%-80% non-condensing

