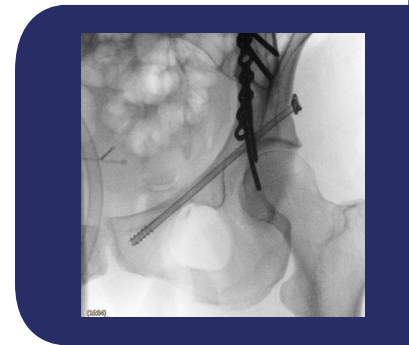




The **Philips Veradius Unity** provides crucial guidance, high-quality images, and accurate positioning to help increase first-time-right results. The Philips Veradius Mobile C-arm increases confidence during complex vascular, cardiac, and orthopedic procedures. ClearGuide combined with color coding on the C-arm speeds up positioning making spinal surgery and other procedures that require frequent position changes more pleasant for clinicians.

## Features

- Wireless foot switch
- Accurate repositioning with Position Memory
- DoseAware real-time dose feedback
- Less than 70 seconds system startup
- ClearGuide
- Incredible image Quality
- Dual 19" color LCD Monitors
- Flat Detector



# Specifications

## C-Arm Stand

- Height: 66.4 - 85.7" (168.7 - 217.7 cm)
- Width: 32.1" (84.1 cm)
- Depth: 76.9 - 108.6" (195.6 - 275.8 cm)
- Weight: 757 lbs. (346 kg)

## Mobile View Station

- Height: 73.6" (186 cm)
- Width: 37.1" (94.3 cm)
- Depth: 27.6" (70.1 cm)

## C-Arm Movements

- Angulation: 140° rotation (+90/-50°) offers a maximum of projection flexibility
- Motorized hight movement: 19.3" (49 cm)
- Longitudinal Movement: 7.0" (20 cm)
- Panning Movement (Swivel): ±10°
- Rotation: ±200°
- Lowest Lateral Position: 40.4" (201.7 cm)
- Source to Image Distance (SID) 39.1" (99.3 cm)
- Free Space in C-Arm: 30.4" (77.2 cm)
- C-Arm Depth: 29" (73 cm)
- Parallel Movement: Dedicated parallel movement with rear-wheel steering, for easy positioning along operating table.
- C-arm stand length: 77.2" (196 cm)

## Mobile View Station Monitors

- Resolution: 1280 x 1024 pixels
- Maximum light output: 650 cd/m<sup>2</sup>
- Minimal Contrast Ratio: 1/400
- Contrast Ratio: >700:1
- Viewing Angle: 170° in horizontal and vertical direction.
- Touchscreen: Offers easy access to post-processing of acquired images, patient demographics as well as PACS (left monitor)
- Monitors: Two 19" high-brightness color LCD monitors for diagnostic image quality display

## X-Ray Generator

- Monoblock
- High tension transformer
- Frequency: 80 kHz

## X-Ray Tube

- Rotating Anode
- High-Power generator

## X-Ray

- Tube Type: Rotating Anode
- Nominal X-ray tube voltage: 120 kV
- Nominal focal spot values: 0.3 and 0.6 mm
- Max. Anode Heat Content: 315 kHU
- Max. Heat Dissipation: 73 kHU/min
- Cooling Method: Active oil-circulation cooling
- Inherent filter: 1.0 mm Al. equivalent
- Integrated Beam Filter: 3.0 mm Ai +0.1mm Cu
- Total Beam Filtration: 6.75 mm Al. eq.

## Operating Values - Pulsed Fluoroscopy

- kV range: 40-120 kV
- mA Peak Range: 1-60 mA
- Pulse Width: 5.6-44 ms
- Pulse Rate: 4-8-15-optional 30

## Operating Values - Exposure Runs

- kV Range: 40-120 kV
- mA Peak Range: 1-60 mA
- Pulse Width: 9.3 178 ms
- Pulse Rate: 4-8-15-optional 1-2-30

## Operating Values - Single Shot Exposure

- kV Range: 40-120 kV
- mA Peak Range: 2-125 mA
- Time Range: 100 and 165 ms

## X-Ray Collimation

- Full lead shutters can be rotated and moved independently.
- Automatic Shutter Positioning (ASP) automatically positions shutters for optimal image quality.

## Flat Detector

- Flat Detector Frees up valuable workspace around the patient during challenging procedures.

## Integrated Laser

- Integrated laser in the flat detector can be activated and deactivated at the touch of a button.
- 635 nm
- Max. Output: <5 mW

## Connections

- Digital Video Out: 2 DVI connectors
- Video Out: S-Video
- Video In: S-Video
- USB Storage: BMP Format

## Communications

- IP Addressing: Static IP, DHCP
- Wireless Standards Supported: IEEE 802.11a/b/g
- Numer of Antennas: 2 external
- User Configurable SSID Support: Up to 16 SSID, each with a unique MAC address and configurable SSID Broadcast.
- Number of Roaming Points Supported: 16
- Authentication Protocols: IEEE802.1x EAP-SIM, EAP-TLS, EAP-TTLS, EAP-FAST and PEAP (With choice of AES, TKIP and WEP encryption)
- Security: IEEE802.11i WPA2, WPA with AES or TKIP encryption.

